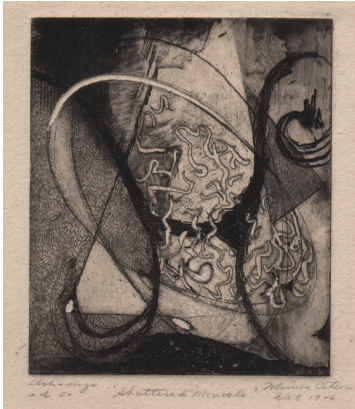


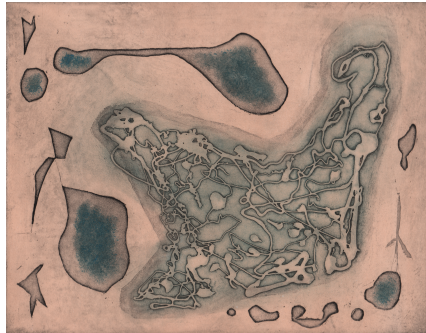
**PROTO-FEMINISM
IN THE PRINT STUDIO**
SEP 13 - DEC 4, 2022

ARCADIA EXHIBITIONS
SPRUANCE GALLERY

Height precedes width, dimensions represent the size of the artwork unframed.



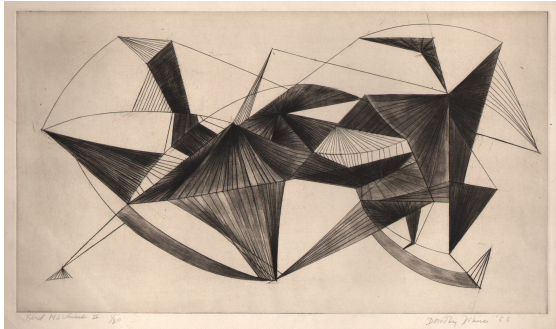
Minna Citron
The Shattered Monocle
1946
engraving and etching
5 7/16 x 4 5/8 in.
Collection of Dolan/Maxwell



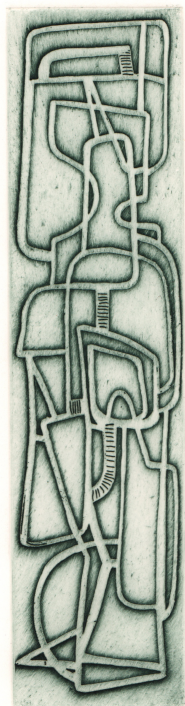
Minna Citron
Doleur Liberatrice
1951
etching
11 x 14 in.
Collection of Dolan/Maxwell



Minna Citron
Men Seldom Make Passes on Women With Glasses
1946
color etching and engraving with gauffrage
14 15/16 x 9 15/16 in.
Collection of Dolan/Maxwell



Dorothy Dehner
Bird Machine II
1953
engraving
8 x 13 7/16 in.
Collection of Dolan/Maxwell



Dorothy Dehner
Man
1958
engraving, etching, and aquatint
6 x 2 in.
Collection of Dolan/Maxwell



Worden Day
A Seafaring Man
1944
etching
21 x 24 1/8 in.
Collection of Dolan/Maxwell



Francine Felsenthal
Back of a Walrus
1945
lithograph
10 x 13 5/8 in.
Collection of Dolan/Maxwell



Francine Felsenthal
Beachcomber
1949
etching and engraving
7 x 8 1/4 in.
Collection of Dolan/Maxwell



Louise Nevelson
The Ancient Garden
1952 - 54
etching and engraving
15 x 17 5/8 in.
Collection of Dolan/Maxwell



Louise Nevelson
The Wild Jungle
1952 - 54
etching and engraving
15 x 17 3/4 in.
Collection of Dolan/Maxwell



Norma Morgan

Lovers

1951

color woodcut

14 1/8 x 10 in.

Collection of Dolan/Maxwell



Norma Morgan

Moor Lodge

1955

engraving

7 3/4 x 13 3/4 in.

Collection of Dolan/Maxwell



Norma Morgan

*Moorland Haven,
Scottish Highlands*

1954

engraving

4 x 21 1/4 in.

Collection of Dolan/Maxwell